

28

# ROUTE 28 CORRIDOR ENVIRONMENTAL ASSESSMENT

October 9, 2019, 6:30 - 8:30 PM  
Yorkshire Elementary School  
7610 Old Centreville Road  
Manassas, VA 20111

## W E L C O M E

### PROJECT OVERVIEW

The Prince William County Department of Transportation (PWC DOT), in coordination with the Virginia Department of Transportation (VDOT) and the Federal Highway Administration (FHWA), is preparing an Environmental Assessment (EA) to evaluate the potential social, economic, and environmental effects associated with proposed improvements in the Route 28 corridor between the City of Manassas and Fairfax County.

The EA will evaluate three alternatives developed in the December 2017 Route 28 Corridor Feasibility Study, a long-term corridor feasibility study funded by the Northern Virginia Transportation Authority (NVTVA) to develop a plan to address the issues along the Route 28 corridor. NVTVA is also funding the preparation of the EA.

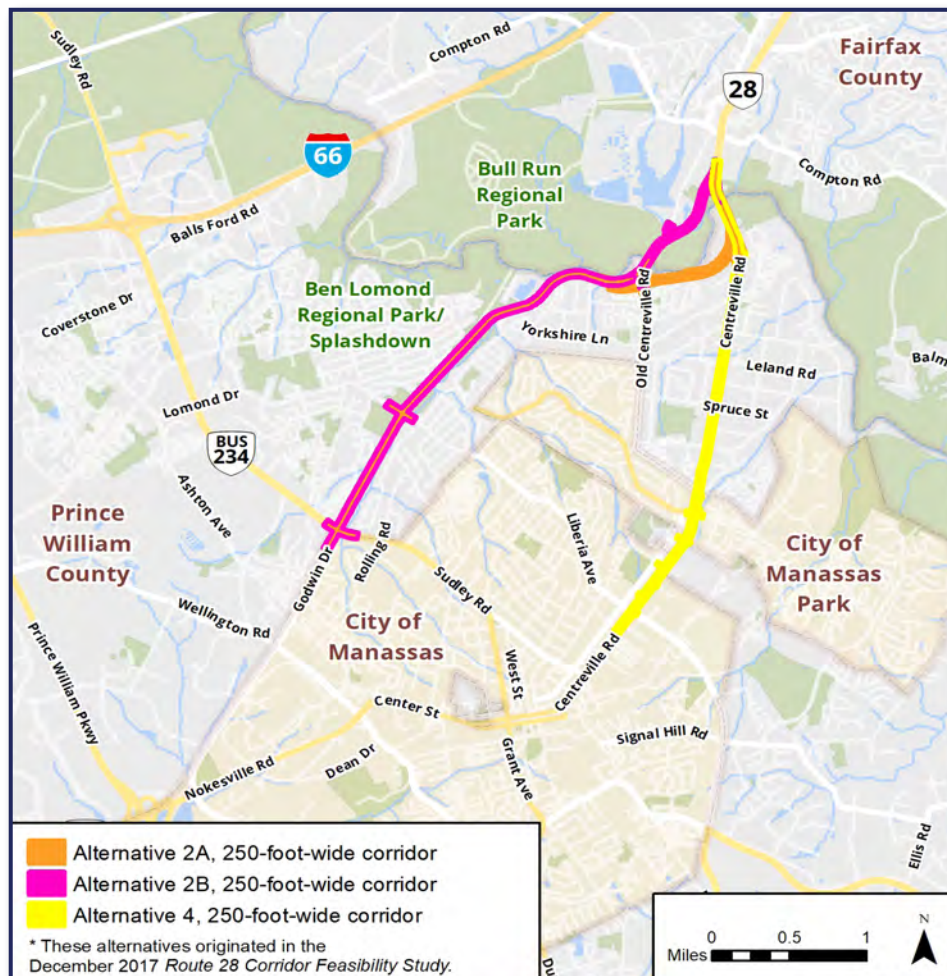


## GOAL OF THE PROJECT

- The goal of this project is to reduce congestion and improve travel times and network reliability in the Route 28 corridor between the City of Manassas and Fairfax County.

## PROJECT ALTERNATIVES

- Alternative 2A would be on new alignment and extend Godwin Drive north from the existing Godwin Drive/Sudley Road intersection, parallel Flat Branch, turn east following the south side of Bull Run until joining existing Route 28, then continue along existing Route 28 to the southern terminus of Fairfax County's Route 28 widening project north of Bull Run.
- Alternative 2B would be on new alignment and extend Godwin Drive north from the existing Godwin Drive/Sudley Road intersection, parallel Flat Branch, then turn east following the south side of Bull Run until Old Centreville Road/Ordway Road where it would cross Bull Run at the existing crossing of Old Centreville Road and join existing Route 28 north of Bull Run.
- Alternative 4 would widen Route 28 on existing alignment between Liberia Avenue and the southern terminus of Fairfax County's Route 28 widening project north of Bull Run.



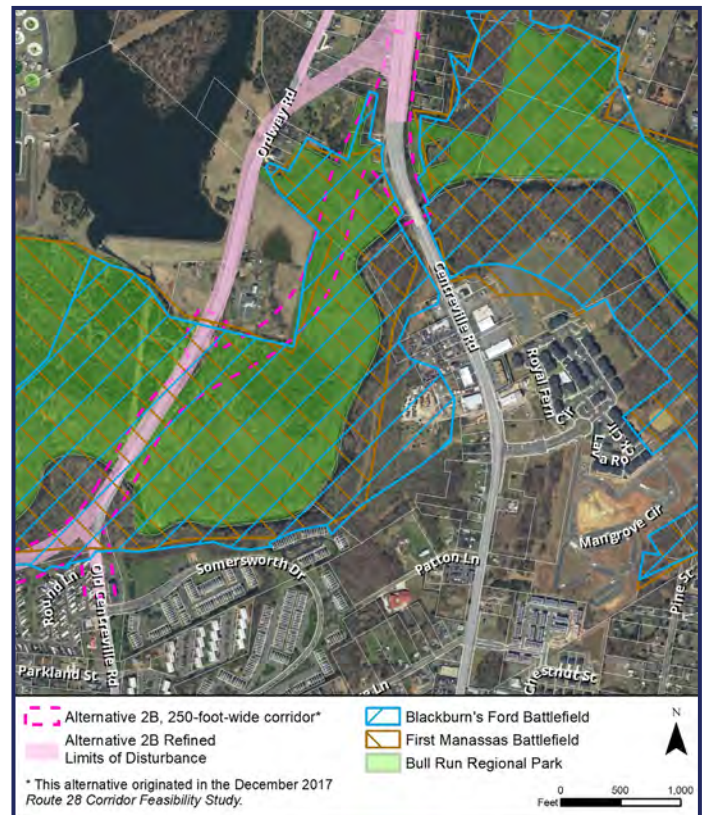
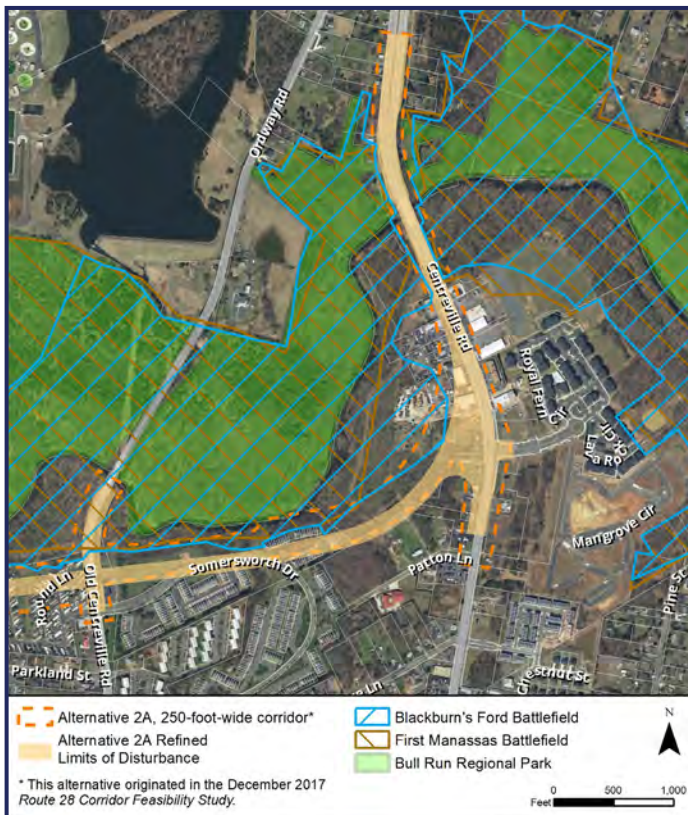


## ALTERNATIVES REFINEMENT

The alternatives analysis in the 2017 Route 28 Corridor Feasibility Study was based on study corridors that were 250 feet wide. The 250-foot-wide study corridors were wider than the expected actual footprint of the roadway and right-of-way to allow flexibility in later alternatives refinement and design.

Efforts have now been made to refine the alternatives carried forward for detailed analysis in the EA. These efforts include adjustments to the alignments of the alternatives to reduce encroachments into parks, historic properties, neighborhoods, floodplains, and wetlands. They also include development of an estimated footprint to accommodate the roadway as well as provide space for construction and utilities. Specific examples of refinements include:

- Alternative 2A: alignment shifted south to avoid the historic property along Bull Run.
- Alternative 2B: north end of alignment shifted north and west to follow Ordway Road farther north before turning east to join Route 28 south of Compton Road, thereby avoiding a portion of Bull Run Regional Park and historic battlefield land.



## PROJECT SCHEDULE

MILESTONE	DATE
Project Scoping Public Meetings	Dec. 5 and 6, 2018
Data Collection	Ongoing
Alternatives Refinement / Public Information Meeting	Oct. 9, 2019
Environmental Assessment	Fall 2019
Public Hearing	TBD
Final Decision on the Environmental Assessment by FHWA	Spring 2020

## COMMENTS

Tonight is your opportunity to provide suggestions and comments on the project alternatives. In addition, please tell us what issues, environmental resources, or other factors are important to you and should receive consideration in the study.

Written comments must be postmarked or sent electronically **no later than October 25, 2019** and may be submitted in four ways:

### AT THIS MEETING

Put written comments in the designated box.

### BY MAIL

Department of Transportation  
Prince William County  
5 County Complex Court  
Prince William, VA 22192

### BY E-MAIL

info@route28study.com

### ON THE GET INVOLVED PAGE OF THE PROJECT WEBSITE

www.route28study.com

## THANK YOU!

## FOR PROJECT UPDATES

Please visit the project website, [www.route28study.com](http://www.route28study.com)

